



MARCH  
AND ASH

# LOCATIONS

## MISSION VALLEY

2835 Camino del Rio South  
San Diego, CA 92108

☎ (619) 314-7336

Hours: Open daily from 7 a.m. – 9 p.m.

## IMPERIAL VALLEY

2433 Marshall Avenue  
Imperial, CA 92251

☎ (760) 624-7336

Hours: Open daily from 9 a.m. – 10 p.m.

## VISTA

2465 Dogwood Way

☎ (760) 655-8203

Hours: Open daily from 9 a.m. – 10 p.m.

## CITY HEIGHTS

2281 Fairmont Avenue  
San Diego CA 92105

☎ (760) 655-8203

Hours: Open daily from 7 a.m. - 9 p.m.

## CHULA VISTA- EAST H ST.

885 East H Street, Suite A,  
Chula Vista, CA 91910

☎ (619) 314-7336

Hours: Open daily from 6 a.m. – 10 p.m.

## CHULA VISTA- TELEGRAPH CANYON

684 Telegraph Canyon Road,  
Chula Vista, CA 91910

☎ (619) 314-7336

Hours: Open daily from 6 a.m. – 10 p.m.

## IMPERIAL BEACH

740 Palm Avenue,  
Imperial Beach CA 91932

☎ 619-314-7336

Hours: Open daily from 8am – 10pm

## SABRE SPRINGS

13510 Sabre Springs Pkwy, Suites #104  
and #105, San Diego CA 92128

☎ 619-314-7336

Hours: Open daily from 7am – 9pm

## CHULA VISTA - BROADWAY & H STREET

646 H Street  
Chula Vista, CA 91910

☎ (619)-382-3141

Hours: Sunday-Thursday 8 a.m. - 9 p.m.  
Friday-Saturday 9 a.m. - 10 p.m.

## PALM DESERT, COACHELLA VALLEY

78010 Country Club Drive  
Palm Desert, CA 92211

☎ (619)-314-7336

Hours: Open daily from 7 a.m. - 10 p.m.

🌐 | [marchandash.com](http://marchandash.com)  
🐦 | [marchandashcan](https://twitter.com/marchandashcan)  
📘 | [marchandash](https://www.facebook.com/marchandash)  
📺 | [marchandashca](https://www.linkedin.com/company/marchandashca)





## ABOUT

March and Ash is a customer-focused, licensed cannabis dispensary. Based in San Diego, we believe that everyone deserves a comfortable and confident cannabis experience and we prioritize customer education, safety, and satisfaction.

Each of our locations is open every day of the week and customers can choose from options to buy in-store, online, and by phone. With a variety of quality products for recreational or medical needs including flower, vapes, edibles, CBD and more.

We believe that with proper education and respect, cannabis can serve its positive and productive purpose: to improve everyday lives. March, in the Roman calendar, is the first month of the year. This is because it comes when spring brings us a new season of life. March signifies the beginning in life.

Ash is what remains of a life once lived, used to fertilize new beginnings. March and Ash represents a respect for the span of our lives, and the role cannabis plays to improve and renew it.

# FAQ / FACT SHEET

## MISSION VALLEY

**Opening Date:** September 2018  
**Sq. Footage:** 2,183 square feet retail space  
**Max Capacity:** 62 indoor / 200+ outdoor  
**Private Event Space:** Yes, both indoor and outdoor event space; property is owned by March and Ash.

## IMPERIAL VALLEY

**Opening Date:** August 2019  
**Sq. Footage:** 4,573 sq. feet retail space  
**Max Capacity:** 50 indoor/ 75+ outdoor  
**Private Event Space:** 3,600 sq. feet indoor space directly adjacent to dispensary.

## VISTA

**Opening Date:** November 2019  
**Sq. Footage:** 4,464 †  
**Max Capacity:** 50 indoor/ 150+ outdoor  
**Private Event Space:** 1,844 sq. foot indoor space and outdoor parking lot used for events

## CITY HEIGHTS

**Opening Date:** January 2021  
**Sq. Footage:** 2,800 sq. feet retail space  
**Max Capacity:** 45 indoor  
**Private Event Space:** Parking lot used for events

## CHULA VISTA – EAST H ST.

**Opening Date:** December 2021  
**Sq. Footage:** 3,826 sq. feet retail space  
**Max Capacity:** 104 indoor  
**Private Event Space:** No

## CHULA VISTA – TELEGRAPH CANYON

**Opening Date:** October 2021  
**Sq. Footage:** 2,517 sq. feet retail space  
**Max Capacity:** 72 indoor  
**Private Event Space:** Outdoor parking lot used for events

## IMPERIAL BEACH

**Opening Date:** March 2022  
**Sq. Footage:** 4,201 sq. feet retail space  
**Max Capacity:** 50 indoor  
**Private Event Space:** Parking lot only. No indoor space

## SABRE SPRINGS

**Opening Date:** April 2023  
**Sq. Footage:** 2,265 sq. feet retail space  
**Max Capacity:** 35 indoor  
**Private Event Space:** No.





## BLAKE MARCHAND CEO

---

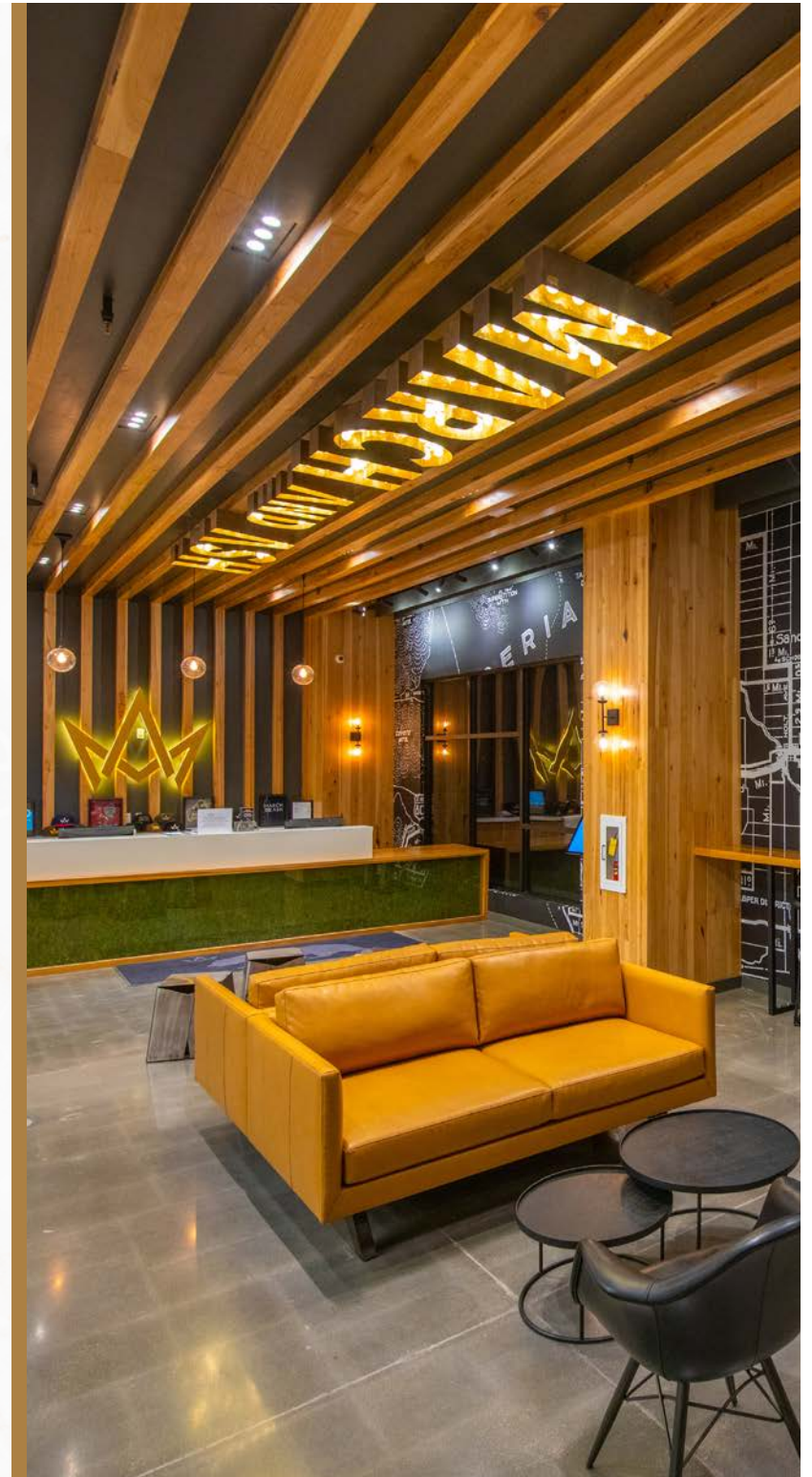
Blake Marchand's leadership expertise stems from his background as the owner of a successful San Diego-based real estate brokerage firm, along with his involvement in a series of diverse business ventures. With each new endeavor, Blake's track record of success has been based on dedicating himself to fostering positive relationships with both his clients and other business owners. Blake has a particular passion for engaging with fellow entrepreneurs who share his vision and embody the pride that goes hand-in-hand with business ownership. He is a true professional who is rooted in maintaining transparent community engagement, treating employees well and always going the extra mile to succeed.

Now, as founder of March and Ash, Blake is not only promoting his business, he is making pioneering efforts to posture the sales of cannabis as a useful and beneficial commodity. His strategically assembled team of subject-matter experts are paving the way for the ideal retail dispensary experience, and he appears on numerous news programs, speaking as a trusted industry voice on a variety of local and regional issues related to the cannabis industry.

## JONATHAN SACO COO

As a 10-year veteran of the cannabis industry, Jonathan Saco is well-known for his expertise in product quality, pricing and retail operations. He has developed deep relationships in Southern California with key vendors, and his experience has given him an understanding of the unique features of the cannabis/customer market.

Jon's strong industry relationships position March and Ash as a leading retailer with access to the most sought-after cannabis products in the California market. March and Ash relies on Jon's expertise to design the customer experience, manage product procurement and organize retail operations including both storefront and delivery.



## MEDIA CONTACT

### JESSICA BRADFORD

Alternative Strategies

2358 University Avenue #2093

San Diego, CA 92104

📞 | 619.858.0322

✉ | [Jessica@altstrategies.com](mailto:Jessica@altstrategies.com)

